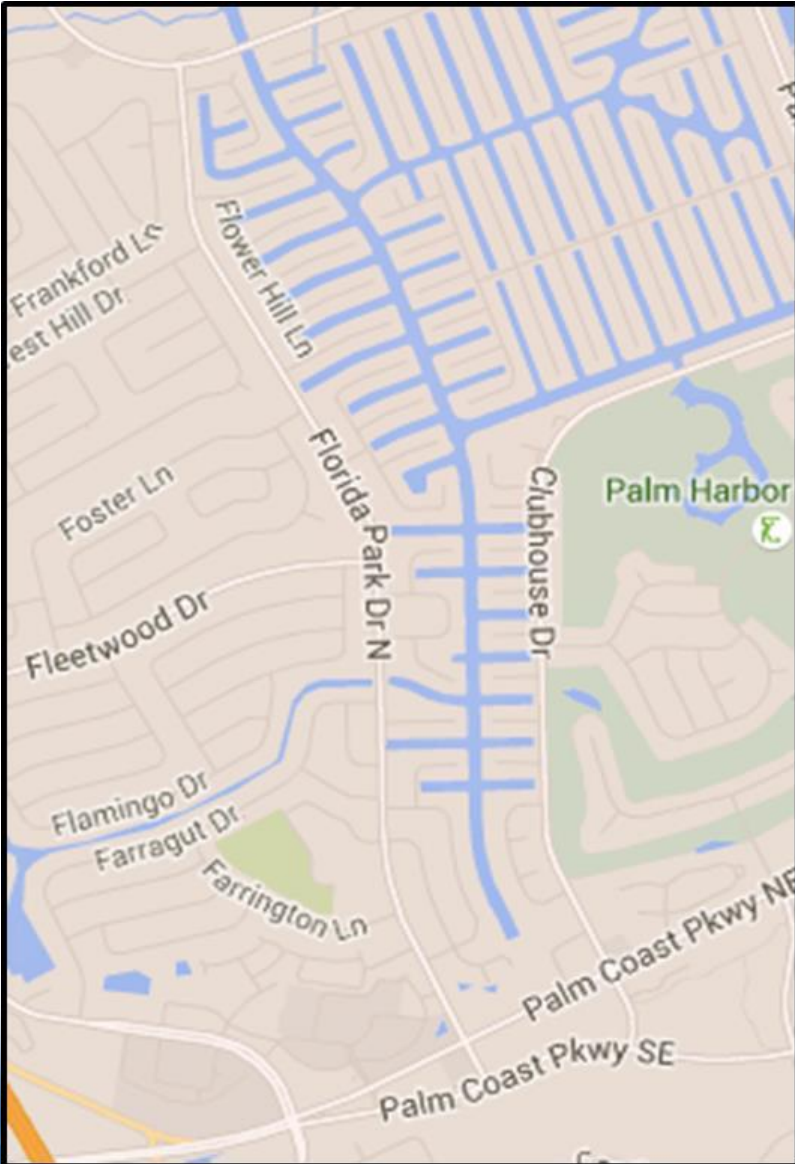




Florida Park Drive

City Council Workshop
October 29, 2019

Florida Park Drive – Unique Roadway



- A collector roadway that connects to arterials at each end and that contains driveways to homes & businesses
- High Intensity Commercial Land Use
- Single Family Residential direct driveway access

Items Requested to Analyze & Implement

- **Speed Limit & Radar Enforced Signage**
- **Truck Restriction**
- **Noise Study**
- **Air Quality Study**
- **Landscape / Traffic Calming Opportunities**

Signage

Speed Limit & Radar Enforced Signage



- ✓ Verified consistency – At least 4 speed limit signs in each direction
- ✓ Add radar enforced plaque at entry speed limit signage

Completed: Week of July 1st

Speed Limit & Radar Enforced Signage



Southern Entry



Northern Entry

Truck Restriction

Truck Restriction



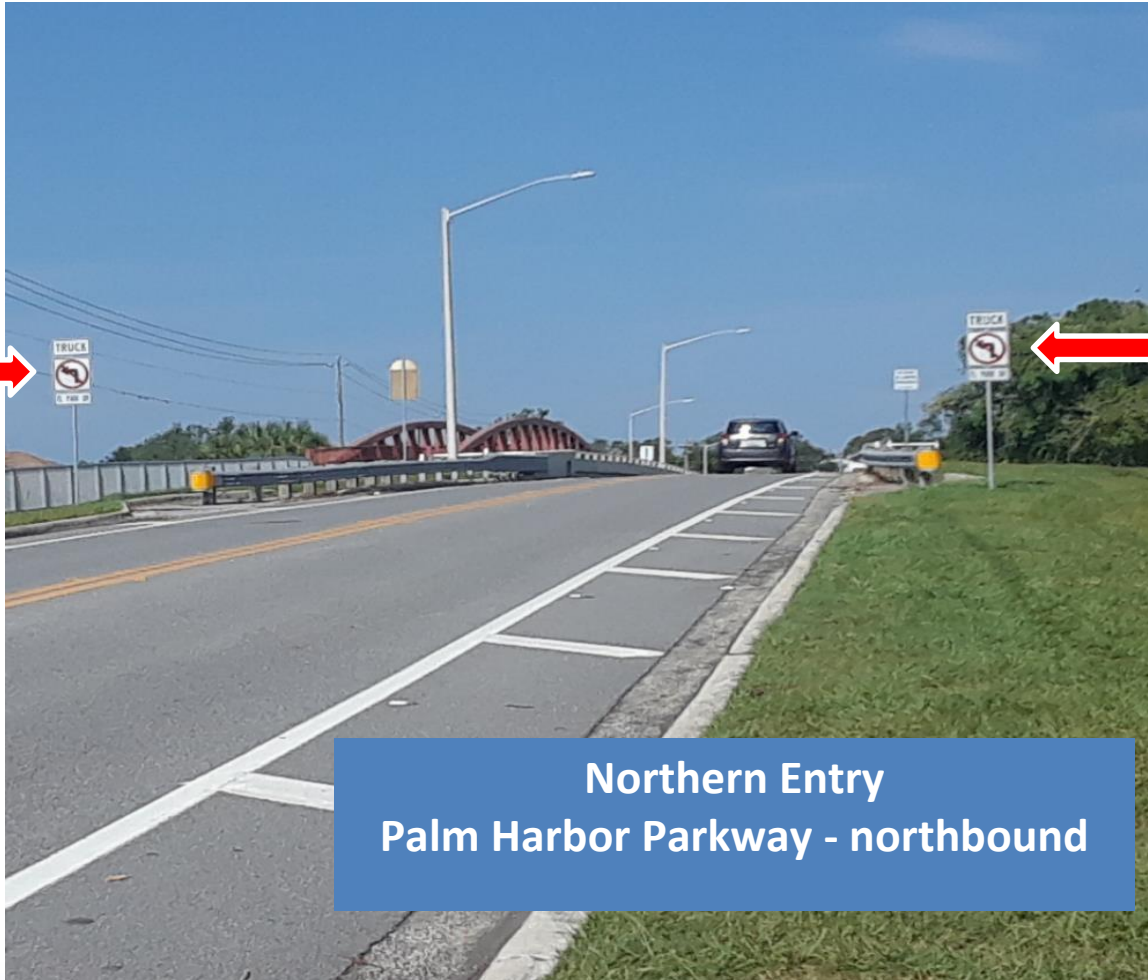
Action Steps

- Install No Truck Signs – Palm Coast Parkway WB & Palm Harbor Parkway
- Validate Truck Count Data
- Determine Truck Restriction - GVW Weight Limitation
- Determine Alternate Truck Routes
- Lead by Example - City truck restriction; GPS GeoFence
- Proposed Truck Restriction Ordinance (Coordinate with Sheriff's Office)
- Install Truck Restriction & Alternate Truck Route Signs
- Notify Haulers & Local Business Owners
- Identify & Communicate with Mapping Apps (Mapquest, Google Maps, etc.)

No Trucks - Signage



No Truck - Signage



Northern Entry
Palm Harbor Parkway - northbound



Northern Entry
Palm Harbor Parkway - southbound

Truck Validation

- **City Traffic Count May 23, 2019**
- **Resident Video Observation May 24, 2019**

Truck Validation – Truck Designations

Light Trucks



Light Trucks



Truck Validation – Truck Designations

Heavy Trucks



Heavy Trucks



Truck Validation – Truck Counts

Time	6:00 am	7:00	8:00	9:00	10:00	11:00 am
Total Traffic 05/23/19	172	419	567	522	586	562
Light Trucks 05/24/19	2	10	14	15	14	11
Heavy Trucks 05/24/19	5	8	8	7	10	6
Total Light plus Heavy	7	18	22	22	24	17
Percentage Light Trucks	1.2%	2.4%	2.5%	2.9%	2.4%	2.0%
Percentage Heavy Trucks	2.9%	1.9%	1.4%	1.3%	1.7%	1.1%

City Traffic (Tube) Count Fleetwood to Farragut - Thurs 05/23/19



Truck Restriction - Ordinance

- Truck Restriction – ‘Heavy Trucks’
 - Any truck with **4 or more axles**, including any attached trailer; or
 - Any truck with a gross weight in excess of **8,000 lbs**
- Establish Truck Routes for Heavy Trucks within the City of Palm Coast
- Restrict Heavy Trucks from any residential road, with exceptions:
 - Any Heavy Truck making **a local delivery** or providing services to or from a location in or abutting the No Truck Zone, which location would otherwise be inaccessible by such vehicle.
 - The operation of a Heavy Truck where necessary to reach the Heavy Truck driver’s **personal residence**. This exception shall not authorize the parking of a Heavy Truck in front of a personal residence or at any location otherwise prohibited under this Code.
 - **Public service or other government-owned vehicles.**
 - **Emergency vehicles.**

Truck Restriction – Signage & Outreach

- Communication to Business Owners
 - **Letter to be sent to Business Owners** along Florida Park Drive and adjacent to Florida Park on Palm Coast Parkway & Florida Park Drive. (November)
 - **Electronic Notification to All Contractors** that Obtain Permits from the City. (November)
 - **Communication with Island Walk Property Management Group.** (November)
- Identify & Notify Mapping Apps (MapQuest, Google Maps, etc.)
- Add Signage to Identify Alternate Truck Routes
 - To be installed after final adoption of ordinance.
- Coordination with Sheriff's Office For Enforcement (Ongoing)

Noise

Noise Impact Analysis

- ☑ Roadway Sampling Utilizing Type 2 Integrating Sound Level Meters during peak hour periods at 4 locations
 - Sampling occurred on July 30, 2019
- ☑ Perform a Federal Highway Administration (FHWA) Traffic Noise Model Utilizing Actual Roadway Geometry and Residential Homes
- ☑ Final Report of Findings
 - Study Delivered August 29, 2019

Noise Impact Analysis - Conclusion

- Traffic Noise Model Evaluation, Performed for Two Methodologies
 - 2019 24 hour count
 - 2017 Average Annual Daily Traffic Count
- Study Conclusion:
 - FDOT Noise Level Standard – 66 dB
 - Human Speech at 3 feet – 65 dB
 - Maximum Recorded Sound Level – 64.3 dB

Air Quality

Air Quality Study

☑ Base Line Monitoring for 2 Roadway Sampling Points

July 30, 2019 to August 30, 2019

- (CO)
- P10 (fungus, mold, pollen)
- P2.5 (non-combusted or partially combusted gas)

☑ Final Report

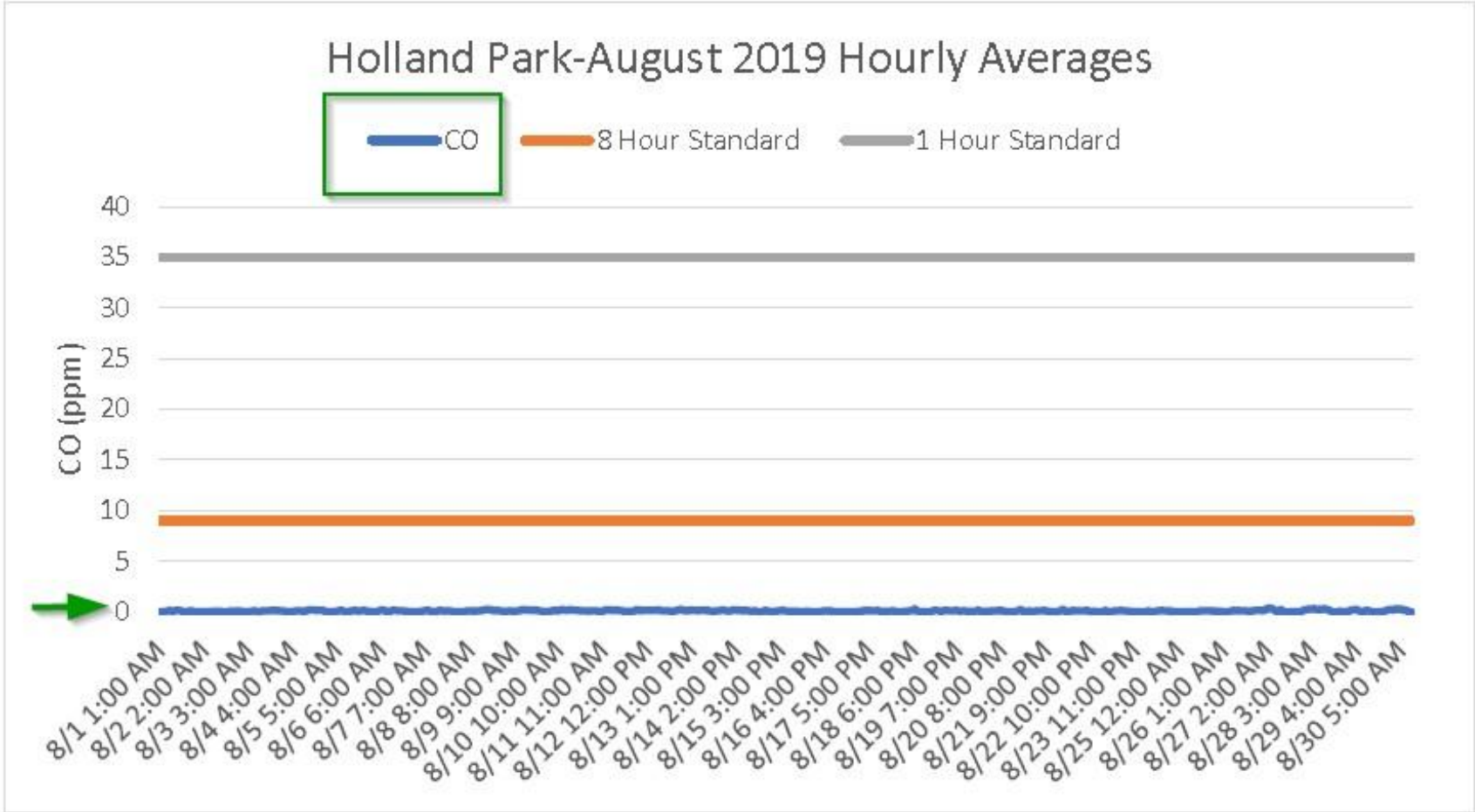
Received September 20, 2019

Air Quality Study - CO

Maximum Acceptable 1-hour standard

Maximum Acceptable 8-hour standard

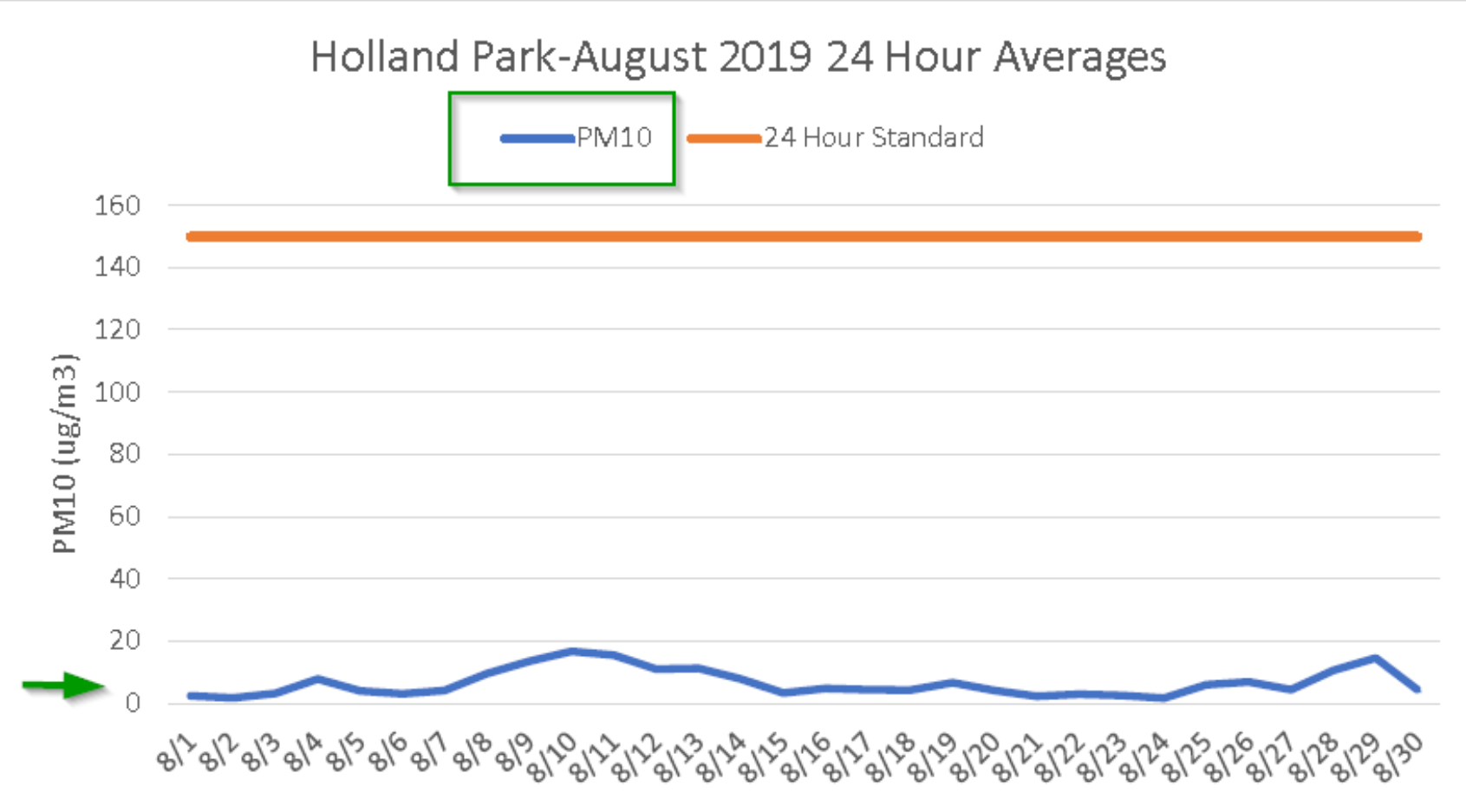
Measured Values



Air Quality Study – PM10

Maximum Acceptable 24-hour standard

Measured Values



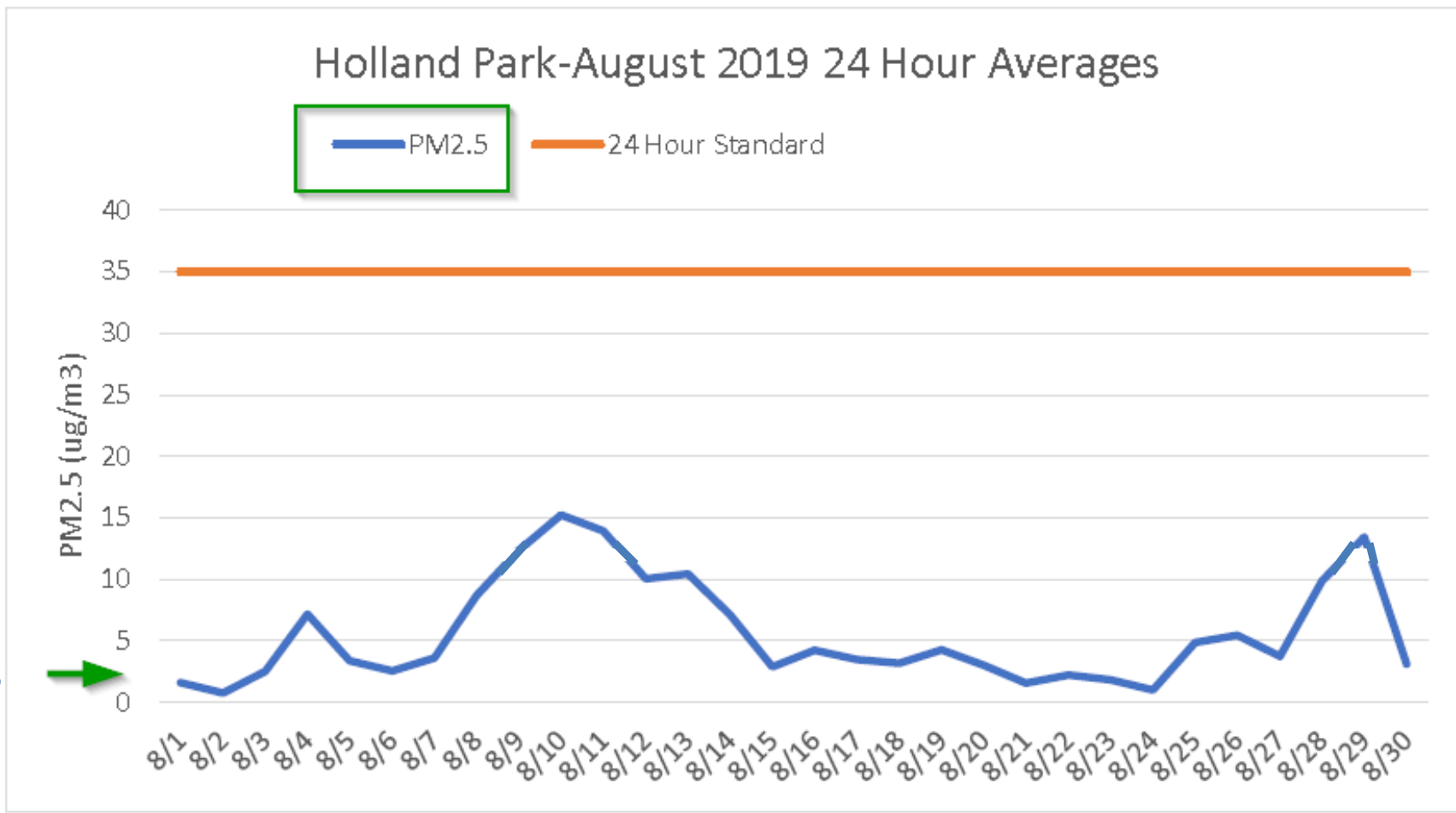
Fungus, Mold, Pollen



Air Quality Study – PM2.5

Maximum Acceptable 24-hour standard

Measured Values



Partially Combusted Gases



Air Study - Conclusion

Study Conclusion:

“No sensor saw any significant events, exceeding any NAAQS, during the month of August.”

NAAQS - National Ambient Air Quality Standards

Landscape / Traffic Calming Opportunities

Landscape / Traffic Calming – Potential Locations



Landscape / Traffic Calming – Option A*

Option A – Landscape Design Services for landscaping on individual residents' properties (151 residential lots)

- Buffering landscapes planted on the resident's property.
- City Landscape Architect's and Environmental Planning Technician's provide design services at no charge as requested by individual residents.
- All landscape purchasing and installation would be the responsibility of the individual homeowner.

*Grant Program (ongoing): City may offer limited grants on an annual basis to cover the cost of landscape materials.

- FY2020 = \$50,000 (~20 lots)
- FY2021+ = \$5,000 (~2 lots per year)

Landscape / Calming – Option A (Existing)



Landscape / Calming – Option A (Proposed)



Landscape / Traffic Calming – Options B1 or B2

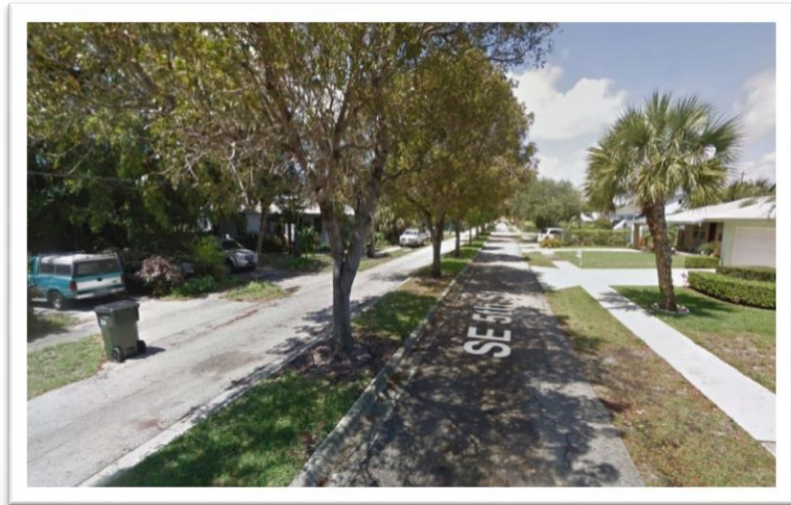
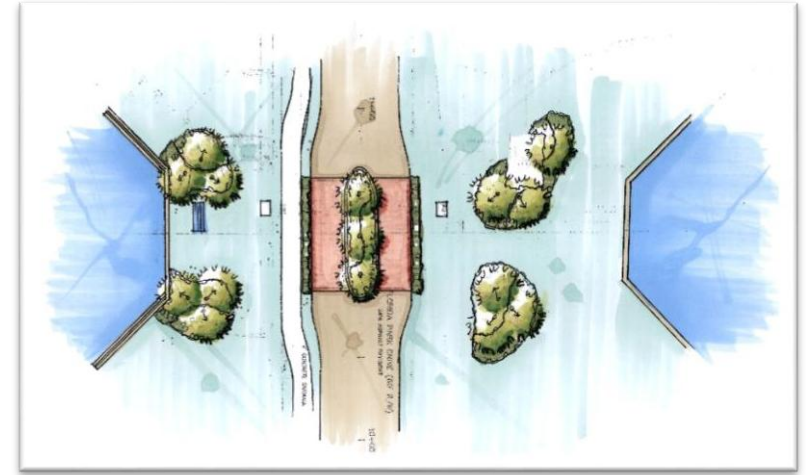
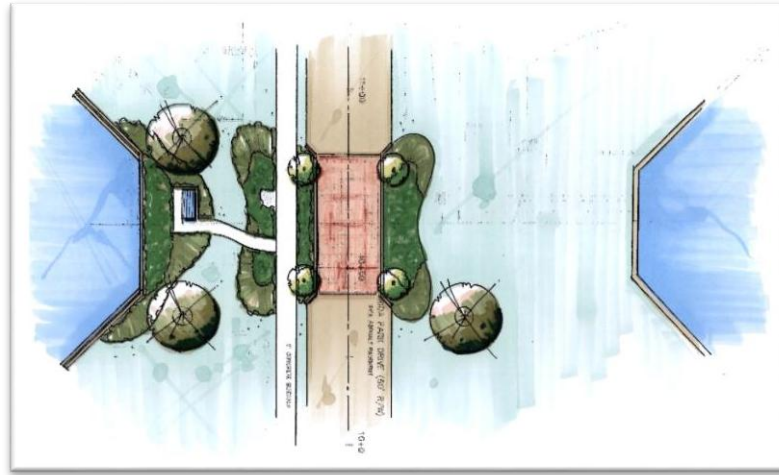
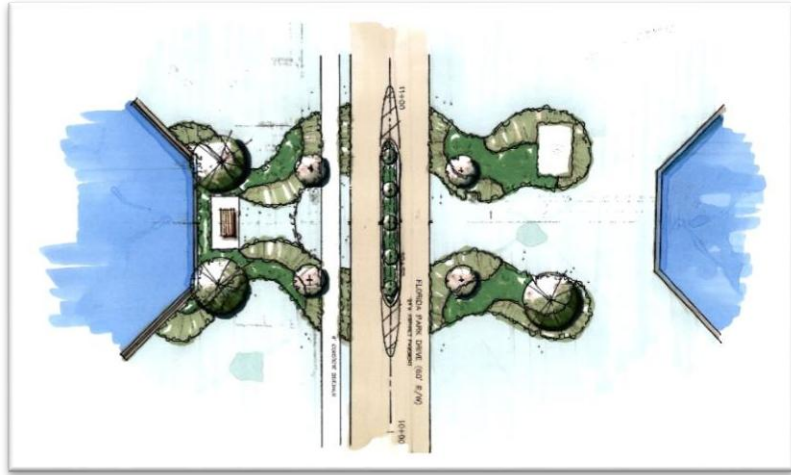
Option B1 – Landscape/Hardscape Features at Two Canal Easement Areas

Potential Improvements:

- Benches w/ associated trash/recycle receptacles.
- Plant Shade trees, palms and understory trees.
- Plant shrubs and groundcovers.



Landscape / Traffic Calming – Option B1



Landscape / Traffic Calming – Option B2*

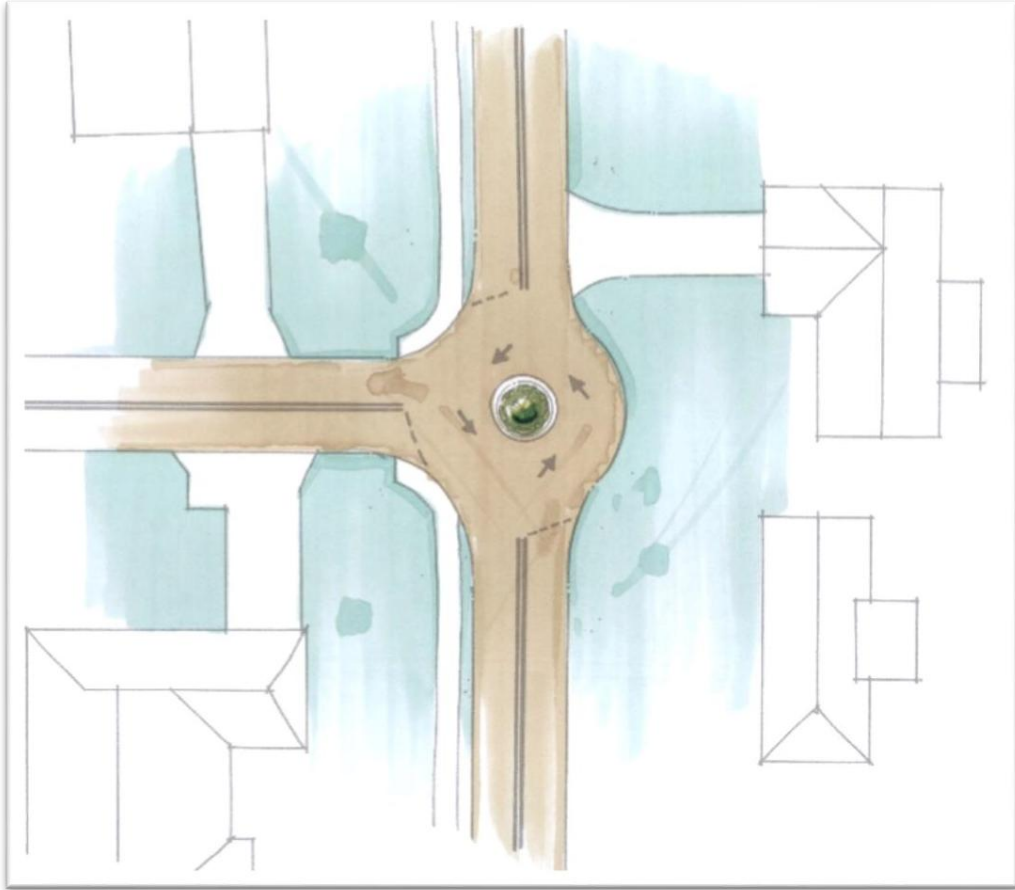


Option B2 –
Landscape/Hardscape Features
at Two Intersections

- Road roundabout addition
- Associated landscape additions/improvements

*Subject to field conditions

Landscape / Traffic Calming – Option B2



Landscape / Traffic Calming – Option C



Option C – Road Way Striping

- Narrow Lanes with New Striping Placement
- To be done in the Future with Roadway Resurfacing



Landscape / Traffic Calming – Summary

Option A Residential Property Owner

- Voluntary participation
- Residents
- Buffer for resident
- Cost Opinion \$2,500 per lot (151 lots including 10 vacant)

Long Term Project

Option B1 or B2 Canal Ends or Intersections

- Benches
- Shade
- Traffic Calming
- Impedes large truck movement
- Cost Opinion \$150,000 to \$300,000
- Traffic Calming
- Eliminates stop signs
- Impedes large truck movement
- Cost Opinion \$300,000 to \$600,000

Future – Requires Funding

Option C Striping

- Traffic Calming
- Visual Road Diet – Reduces Average Speed
- To be done with Road Resurfacing (future)
- \$60,000 cost - included in resurfacing budget

Upcoming

Next Steps

Community Outreach

Review of Truck Restriction & Draft Ordinance with Residents

September 23, 2019

Ordinance Presentation

1st Reading: November 5th

2nd Reading: November 19th

Grant Program (Optional)

Develop Grant Program

Public Meeting with Florida Park Drive Residents (Optional)

Meeting (Community Center): Grant Program Showcase

Public Notifications

Contractors, Business Owners, Island Walk Property Manager, Mapping App Contacts

City Council

Present Feedback From Public Meeting and & Grant Program

Questions?



