

**Cinnaminson Township Police Department**  
October 7 at 1:54 PM ·

Recently, the Cinnaminson Township Police Department purchased a new radar traffic recorder called the BLACK CAT II PLUS RADAR RECORDER which detects 2 lanes in the same or different directions (with lane separation data), provides vehicle data for Volume, Speed, Class by Length and Gap.

We have already begun to conduct traffic studies on a few roads within our township and will now be moving the unit in a different location each week based upon resident complaints. This data will assist us in determining where enhanced traffic enforcement is required to deter future speeding. Of course, this does not take the place of having an actual police officer monitoring a specific location for all types of other motor vehicle violations, but it does help us in general in effectively deploying our officers.

I have attached a few of the results so far and will be adding more as the data is collected. I want to thank everyone who has already emailed me their concerns and please continue to send me any locations you may feel needs more police presence.

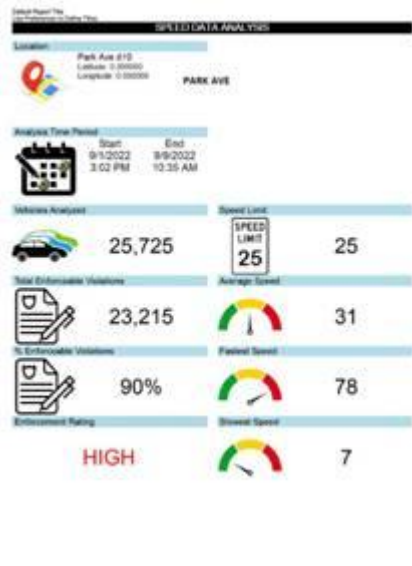
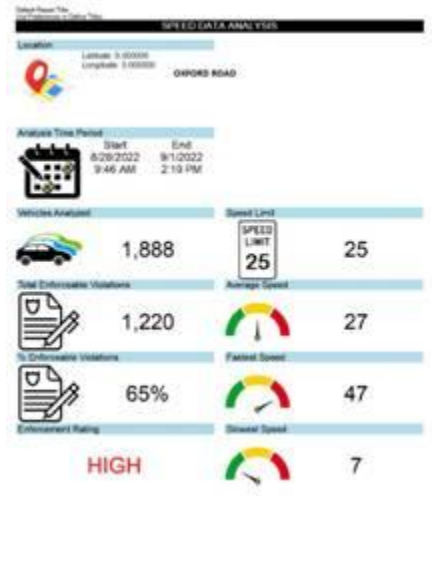
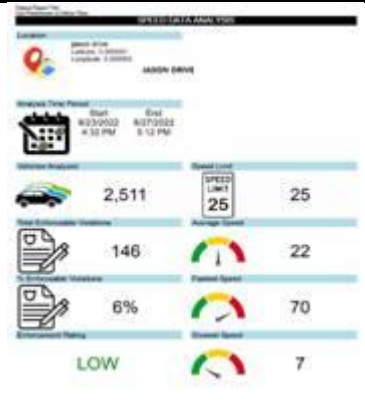
I realize some of these speeds may be a little shocking, but I am all about transparency and keeping the public properly informed.

Chief Rich Calabrese

Cinnaminson Township Police Department

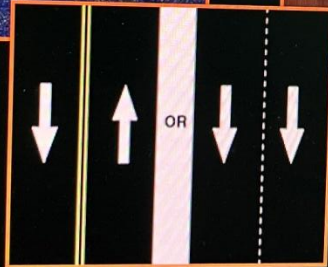
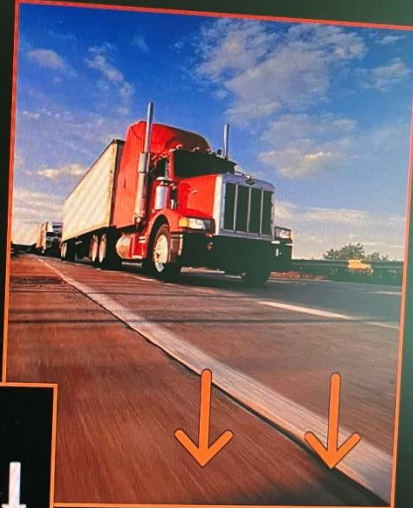
[RCalabrese@CinnaminsonPolice.org](mailto:RCalabrese@CinnaminsonPolice.org)

[BLACK CAT II INFO | JAMAR Technologies](#)





# LANE CONFIGURATIONS



**LANE SEPARATED DATA**

**LANE MARKINGS NOT REQUIRED**

SAMSUNG

## SPEED DATA ANALYSIS

### Location



Park Ave d10  
Latitude: 0.000000  
Longitude: 0.000000

**PARK AVE**

### Analysis Time Period



Start	End
9/1/2022	9/9/2022
3:02 PM	10:35 AM

### Vehicles Analyzed



25,725

### Speed Limit



25

### Total Enforceable Violations



23,215

### Average Speed



31

### % Enforceable Violations



90%

### Fastest Speed



78

### Enforcement Rating

**HIGH**

### Slowest Speed



7

## SPEED DATA ANALYSIS

### Location



Latitude: 0.000000  
Longitude: 0.000000

**OXFORD ROAD**

### Analysis Time Period



Start	End
8/28/2022	9/1/2022
9:46 AM	2:19 PM

### Vehicles Analyzed



1,888

### Speed Limit



25

### Total Enforceable Violations



1,220

### Average Speed



27

### % Enforceable Violations



65%

### Fastest Speed



47

### Enforcement Rating

**HIGH**

### Slowest Speed



7



## SPEED DATA ANALYSIS

### Location



jason drive  
Latitude: 0.000000  
Longitude: 0.000000

JASON DRIVE

### Analysis Time Period



Start	End
8/23/2022	8/27/2022
4:32 PM	5:12 PM

### Vehicles Analyzed



2,511

### Speed Limit



25

### Total Enforceable Violations



146

### Average Speed



22

### % Enforceable Violations



6%

### Fastest Speed



70

### Enforcement Rating

LOW

### Slowest Speed



7

## SPEED DATA ANALYSIS

### Location



Latitude: 0.000000  
Longitude: 0.000000

**CHESTNUT HILL DRIVE**

### Analysis Time Period



Start	End
5/26/2022 3:29 AM	6/4/2022 9:16 AM

### Vehicles Analyzed



8,631

### Speed Limit



25

### Total Enforceable Violations



4,857

### Average Speed



25

### % Enforceable Violations



56%

### Fastest Speed



73

### Enforcement Rating

**HIGH**

### Slowest Speed



6

[Black Cat II Radar Recorder Install - YouTube](#)

[Setup for Black Cat II and Law Enforcement RADARs - YouTube](#)

### **\$ SAVES MONEY ON EVERY COUNT \$**

Did you know that when you consider field tech hourly rates, traffic control fees, and counting accessory costs (tube, tape, etc.), it could cost you up to \$3,000 to conduct 10 traffic counts with a tube counter?

Those same 10 traffic counts could cost less than \$500 when using a JAMAR Black Cat II Plus Radar!

### **Specifications**

Configuration: 2 Lanes, bi- or same direction

Memory Size: 2GB (approx. 200,000,000 vehicles)

Data Storage: Up to 256 Data Files

Speed Range: 5 – 130mph Radar Range: 100 Feet

Operating Temperature: -40 F (-40C) to +158 F (+70C)

Count Accuracy: (98%, ignoring obscuration)

Speed Accuracy: +/- 2% at 95% confidence

Length Accuracy: +/- 16 Inches or +/- 5% which ever is the greater at a 95% confidence

### **Software: STARnext**

Remote Access: Optional Modem

Network Access: Ethernet Connection

Wireless Access: Bluetooth

Wireless Range: Up to 100 feet

Battery: 12 Volt Battery Charge Life: 7-10 Days

Power Option: Optional Solar Panel

Power Option: Power over Ethernet (PoE) Connection

Weight (with Battery): 14 lbs.

Approval: CE and FCC Approved